



**Regal**  
LEISURE HOMES

---

[regalh.co.uk](http://regalh.co.uk)



---

# Where quality and luxury is more than skin deep



Image courtesy of Ulwell Holiday Park

Part of



## Build Quality

Built in-house to exacting quality standards by skilled craftsmen and women. A fully galvanised chassis is standard on all models.

## Innovative Design

A reputation for innovative design by our experienced, in-house design team.

## Customer Care

Strong aftersales with a commitment to timely turnaround of claims.

## Warranty

Peace of mind with our comprehensive warranty scheme.

## Energy Efficiency

Built with energy efficiency in mind to keep your bills low. Three ranges are now available in BS 3632 residential specification which is more efficient still!

---

# A passion for design

Regal Leisure Homes is proud to present the new 2025 range of premium holiday homes.

The design team have worked tirelessly to ensure each model encompasses its own unique theme and styling, and we're sure you're going to love the new designs! From the luxurious BS 3632.

Cranleigh Lodge, a flagship model which pushes the boundaries in both structural and interior design, to the affordable, coastal themed Retreat, there's bound to be a model that suits your taste and budget.

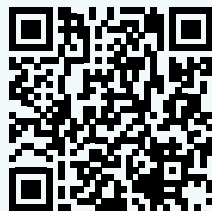
**New for 2025:** The BS 3632 Clifton Lodge, the BS 3632 Autograph and the Harlington.

---

## Features as standard include...

- Double glazing
- Central heating
- USB charging points
- Freestanding sofas
- Super king-size or king-size beds in master bedrooms (except Retreat 28ft)
- Smoke alarms, carbon monoxide detectors, Crib 5 mattresses and flame-retardant furnishings
- Fully galvanised chassis engineered to withstand the elements.

Scan me



To view online

Our inspiring range of leisure homes...

4 Cranleigh Lodge



8 Clifton Lodge



12 Autograph



16 Harlington



20 Hemsworth



24 Retreat



---

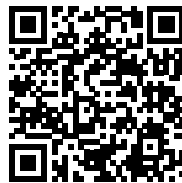
# Cranleigh Lodge

Outstanding & distinctive

Pushing the boundaries in both structural styling and interior design, the refreshed, flagship, Cranleigh Lodge, built to BS 3632 residential standard, is an opulent and luxurious holiday home with a boutique hotel feel.



Scan the code







## Cranleigh Lodge features

### Exterior

- Large, front aspect, panoramic windows and French doors with black bars
- Rigid Claystone vinyl exterior cladding
- Feature Anthracite stone effect cladding to front and side aspect
- Anthracite uPVC double glazing

- Ceiling mounted Bluetooth speakers
- New media unit
- Pendant lighting
- Four scatter cushions
- USB socket

### Kitchen / Dining Area

- Double Velux windows
- Larder cupboard
- Domestic sized kitchen units with soft close doors and drawers
- Integrated fridge freezer, washing machine, microwave, oven and slimline dishwasher
- Designer glass extractor hood
- Stylish 25mm worktop and matching full-height upstand
- Freestanding dining table with four designer chairs
- Electric oven and separate gas hob

### Construction

- Built to BS 3632 residential specification
- Fully insulated floors, walls and roof
- Fully galvanised steel chassis with detachable tow bar
- Vaulted ceilings throughout
- Minimum ceiling height of 7ft, maximum ceiling height of 9ft
- Gas combi central heating system
- Black nickel light switches and sockets throughout

### Lounge

- Modern freestanding sofa, two armchairs and a large footstool
- Cylindrical electric log burner
- Contemporary feature radiator

## Cranleigh Lodge floor plan

Two bedroom 44' x 14'



### Master Bedroom

- Super king-size divan and luxury mattress
- Large built-in wardrobe with mirrored sliding doors
- Window seat and cushions with built-in storage
- Luxurious scatter cushions and matching bed runners
- Feature pendant bedside lights
- Recessed dressing table
- Feature wallboard
- TV point and USB socket

### Twin Bedroom

- 3ft beds with wall-mounted headboards
- TV point and USB socket
- Fitted wardrobe, shelves and cupboards
- Feature wallboard

### Bathroom / En-suite

- Fully enclosed shower with sliding glass door

### Popular Optional Features

- CanExel cladding



---

# Clifton Lodge

## Penthouse styling

Chic, penthouse styling, a striking, contemporary colour scheme and luxury features throughout, set the tone for the new, sophisticated Clifton Lodge.



Scan the code









---

## Clifton Lodge features

### Exterior

- White uPVC double glazing
- Sliding patio doors to the front elevation
- Light grey vinyl exterior with feature vertical black cladding

### Construction

- Built to BS 3632 residential specification
- Fully insulated floors, walls and roof
- Fully galvanised steel chassis with detachable tow bar
- Vaulted ceilings throughout
- Minimum ceiling height of 7ft, maximum ceiling height of 9ft
- Gas combi central heating system
- Satin chrome light switches and sockets throughout

### Lounge

- Freestanding sofa, two armchairs and a large footstool
- Contemporary feature, full-height radiators
- Media unit with feature panelling to the sides
- Recessed display shelves
- Feature pendant lighting
- Six scatter cushions
- USB sockets

### Kitchen / Dining Area

- Feature kitchen/dining area divide with reeded panelling
- Large six-seater dining table
- Roof light to the kitchen
- High quality, domestic sized kitchen units
- Integrated fridge freezer, microwave and slimline dishwasher
- High-level electric oven with separate grill and 5-burner hob
- Soft close cupboard doors and drawers
- Washing machine

### Master Bedroom

- Super king-size bed (two-bed model only)
- Large feature wall-mounted headboard
- Large built-in wardrobe with mirrored sliding doors
- Two-drawer bedside cabinets
- Bed runner and matching cushions
- Recessed dressing table
- Feature beam
- Roman blinds
- USB socket and TV point
- En-suite with shower

## Clifton Lodge floor plans

### Two Bedroom 44' x 14'



### Three bedroom 44' x 14'



### Twin Bedroom

- 3ft beds to two-bed model and to one twin room in three-bed model
- Fitted wardrobe and bedside table
- USB socket and TV point

### Popular Optional Features

- CanExel cladding
- Anthracite windows

### Bathroom

- Fully enclosed shower with sliding glass door



---

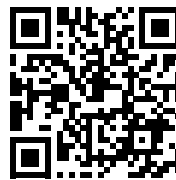
# Autograph

## Refined modern styling

Timeless elegance meets contemporary comfort and design. A harmonious blend of styling, the Autograph showcases modern luxury with traditional tones.



Scan the code



to take the 3D tour







## Autograph features

### Exterior

- White uPVC double glazing
- French doors to the front elevation
- Claystone vinyl exterior with feature vertical oak cladding

### Construction

- Built to BS 3632 residential standard
- Fully insulated walls, floor and roof
- Fully galvanised steel chassis with detachable tow bar
- Minimum ceiling height of 7ft
- Gas combi central heating system
- Satin chrome light switches and sockets throughout

### Lounge

- Two freestanding sofas and a large footstool
- Feature wall panelling to the lounge
- Floating TV media unit with feature panelling
- Feature lighting
- Four scatter cushions
- USB sockets
- Pull-out occasional sofa bed

### Kitchen / Dining Area

- Large bench seat style dinette seating
- High quality, domestic sized kitchen units
- Integrated fridge freezer, dishwasher and microwave
- Soft close cupboard doors and drawers
- Roman blind

### Master Bedroom

- Super king-size bed (two-bed model only)
- Large feature wall-mounted headboard
- Sliding mirror wardrobes
- Two-drawer bedside cabinets
- Recessed dressing table and display shelves
- Feature wallboard
- Roman blinds
- USB socket and TV point
- Shower to en-suite in both the two and three-bed models

## Autograph floor plans

### Two bedroom 42' x 14'



### Three bedroom 43' x 14'



#### Twin Bedroom

- 3ft beds to two-bed model
- Feature wallboard
- Fitted wardrobe and bedside table
- USB socket and TV point

#### Bathroom

- Fully enclosed shower with sliding glass door
- Ceramic basin and toilet
- Shelving above WC

#### Popular Optional Features

- CanExel cladding
- Anthracite windows
- Washing machine/washer dryer
- Bluetooth speakers to lounge

Please note: Anthracite windows as shown in the exterior image are an optional extra



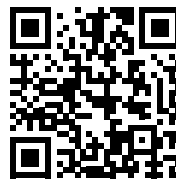
---

# Harlington

## Contemporary earth-tone styling

Light, bright, contemporary and fresh, the new Harlington offers a feast for the eyes with its contemporary earth tones. The striking design style spells pure luxury, however style in no way compromises functionality, and the Harlington is a surprisingly practical holiday home too!

Scan the code



to take the 3D tour









## Harlington features

### Exterior

- Sliding patio doors to the front elevation
- Rigid Claystone vinyl exterior cladding
- Feature vertical walnut cladding to front and side elevation
- Black fascias, soffits, gutters and downpipes
- White uPVC double glazing

### Kitchen / Dining Area

- High quality, domestic sized kitchen units
- Integrated fridge freezer, microwave and slimline dishwasher
- Electric oven and 4-burner hob with built-in extractor
- Roman blind
- Freestanding dining table and chairs

### Construction

- Fully insulated floors, walls and roof
- Fully galvanised chassis with detachable tow bar
- Vaulted ceilings throughout
- Minimum ceiling height of 7ft
- Gas combi central heating system
- Satin chrome sockets throughout

### Master Bedroom

- King-size (lift-up) bed to master bedroom with wall-mounted headboard
- Large built-out wardrobe with mirrored sliding doors
- Dressing table and bedside cabinets
- Feature pendant lighting
- Feature wallboard and reeded panelling
- USB socket
- En-suite with shower (to both two and three-bed models)

### Lounge

- Freestanding sofa and sofa bed with scatter cushions
- Footstool with lift-up storage
- Media unit with feature reeded panelling
- USB socket

## Harlington floor plans

### Two bedroom 42' x 13'



### Three bedroom 43' x 13'



#### Twin Bedroom

- 2ft 6" beds to the two-bed model and one bedroom on the three-bed model
- TV point and USB socket
- Fitted wardrobe and bedside cabinet
- Feature wallboard and reeded panelling

#### Bathroom / En-suite

- Fully enclosed shower with sliding glass door

#### Popular Optional Features

- Washing machine / washer dryer
- Bed runner and scatter cushion pack
- CanExel cladding
- Anthracite windows

Please note: Anthracite windows as shown in the exterior image are an optional extra



---

# Hemsworth

## Contemporary & Relaxed

The Hemsworth has a spacious, contemporary feel. Front French doors are designed to maximise your external views and light whilst providing practical access to your outside space.

Scan the code







## Hemsworth features

### Exterior

- Champagne aluminium cladding
- French doors
- White uPVC double glazing

### Construction

- Fully insulated floors, walls and roof
- Vaulted ceilings throughout
- Minimum ceiling height of 7ft
- Gas combi central heating system
- Satin chrome sockets throughout
- Fully galvanised steel chassis with detachable tow bar

### Lounge

- Freestanding L-shaped sofa
- Pull-out occasional bed
- Accent armchair (apart from in the CL layout)
- Five scatter cushions
- Feature TV and storage unit
- Contemporary room divider
- Coffee table
- USB socket

### Kitchen / Dining Area

- Domestic size kitchen units
- Integrated fridge freezer and microwave
- Soft close cupboard doors and drawers

- Electric oven and 4-burner hob with built-in cooker hood
- Freestanding dining table and four chairs
- Bench with seat pad and coat hooks
- Feature wall

### Master Bedroom

- King-size bed
- Feature wall with drop pendant lighting
- Dressing table with timber panelling
- Freestanding bedside cabinets
- Walk-in-wardrobe\*
- Ensuite shower room (two-bed models only)\*
- USB socket
- TV point
- Dressing table stool (except 36ft)

### Twin Bedroom

- 2ft 6" beds (13ft two-bed models) OR 2ft 3" beds (12ft and 13ft three-bed models)
- TV point
- USB socket

### Bathroom / En-suite

- Fully enclosed shower with sliding glass door

\*Not in the 36ft floorplan

## Hemsworth floor plans

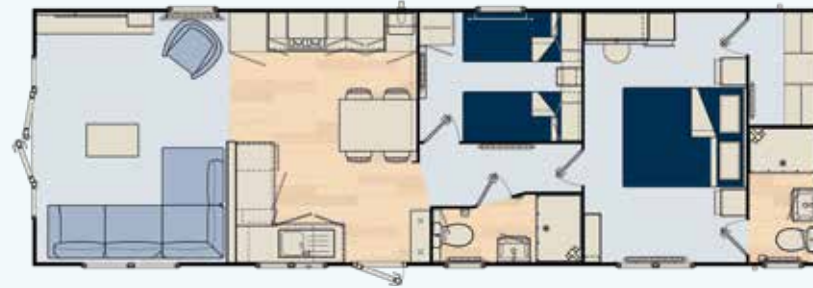
Two bedroom 36' x 12'



Two bedroom 40' x 12'



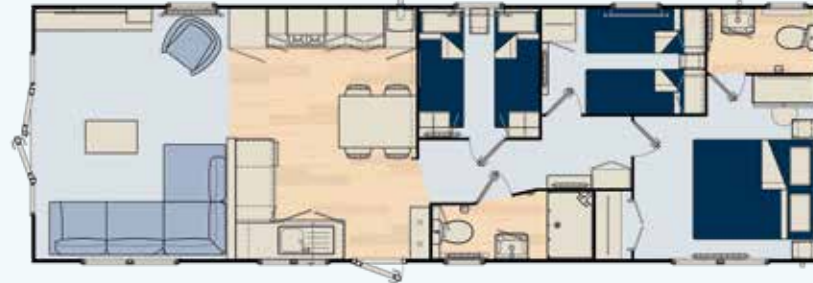
Two bedroom 40' x 13'



Two bedroom 40' x 13' (CL)



Three bedroom 40' x 13'



### Popular Optional Features

- Vinyl cladding
- CanExel cladding
- Anthracite windows
- 450mm slimline dishwasher
- 600mm washer dryer

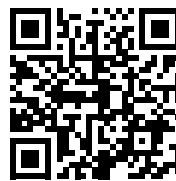
---

# Retreat

## Cosy, Coastal Design

True to its name, the Regal Retreat provides comfortable, cosy and affordable accommodation with a lovely holiday vibe provided by a coastal interior design theme – the perfect holiday escape!

Scan the code









## Retreat features

### Exterior

- Champagne aluminium cladding
- Fixed, full-length window as standard
- White uPVC double glazing

### Construction

- Fully insulated floors, walls and roof
- Vaulted ceilings throughout
- Minimum ceiling height of 7ft
- Gas combi central heating system
- Fully galvanised steel chassis with detachable tow bar

### Lounge

- Freestanding sofa and sofa bed with scatter cushions
- Feature electric stove set in a fire unit with shelves
- TV unit with storage
- Contemporary bookshelf / display unit and coffee table
- USB socket

### Kitchen / Dining Area

- Domestic sized kitchen units
- Integrated fridge freezer and microwave
- Electric oven and 4-burner hob with curved glass cooker hood

- Freestanding dining table and four chairs
- Bench seat and coat hooks

### Master Bedroom

- King-size bed (except 28ft) with wall-mounted headboard
- Floating shelf above the bed
- Dressing table with stool\*
- Fitted wardrobe and bedside cabinets
- Feature blue wall
- Wall lights
- USB socket

### Twin Bedroom

- 2ft 3" beds with wall-mounted headboards
- Shelves and storage above beds
- Fitted wardrobe
- USB socket

### Bathroom

- Fully enclosed shower with sliding glass door

### Popular Optional Features

- Full size dishwasher or washing machine
- Bed runner and scatter cushion pack
- Lift-up bed to master bedroom
- French doors

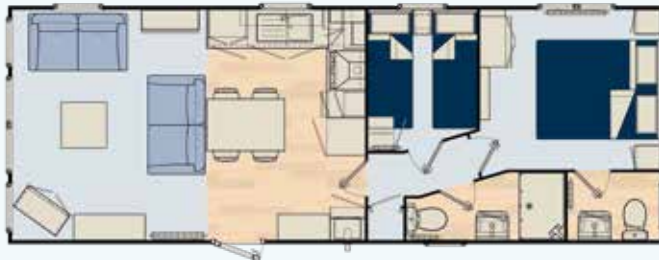
\*Stool to 38ft only

## Retreat floor plans

Two bedroom 28' x 12'



Two bedroom 33' x 12'



Two bedroom 38' x 12'



Two bedroom 36' x 12'



Three bedroom 40' x 12'



# BS 3632 Residential Specification



New for 2025, our Cranleigh Lodge, Clifton Lodge and Autograph come with the new upgraded BS 3632 residential specification as standard. These BS 3632 models bring you:

- Thicker residential standard walls
- Upgraded residential insulation in the floor, walls and roof meeting required 'u' values
- Greater sound reduction through the external construction to meet required sound reduction values

- Low-E glazing throughout
- Some of the best energy efficiency ratings in the industry
- Residential levels of ventilation with hidden eaves keeping your home properly ventilated
- Full condensing boiler gas central heating

All this, giving you greater levels of comfort, keeping you warmer in the winter, cooler in the summer and reducing energy costs.

## Bed sizing guide

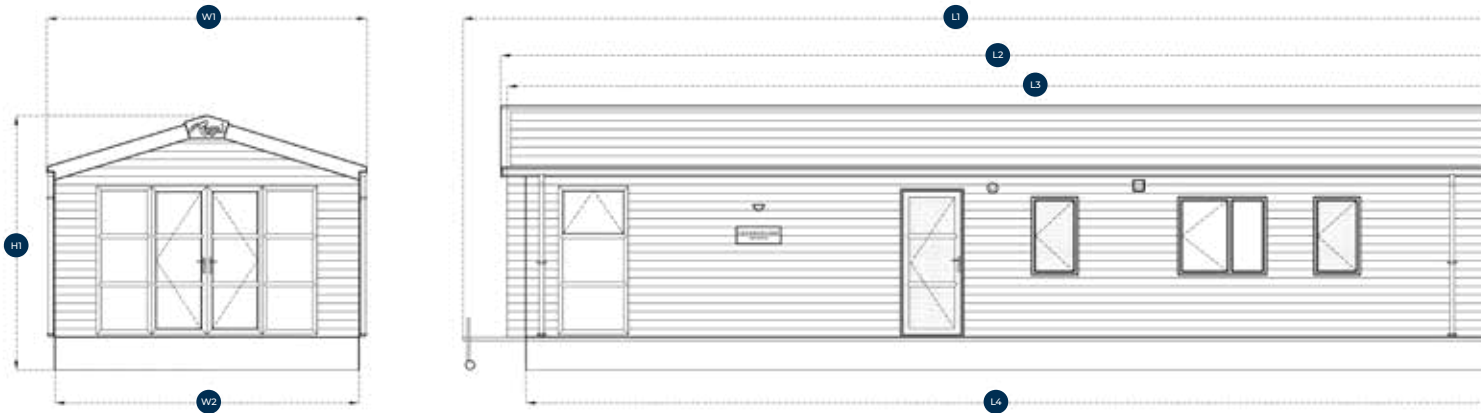
Bed Sizes			Cranleigh Lodge	Clifton Lodge			Autograph		Harlington		Hemsworth				Retreat				
Standard ✓	Optional ◊	Not available -	44'x14' 2 BED	44'x14' 2 BED	44'x14' 3 BED	42'x14' 2 BED	43'x14' 3 BED	42'x13' 2 BED	43'x13' 3 BED	36'x12' 2 BED	40'x12' 2 BED	40'x13' 2 BED (CL)	40'x13' 2 BED	40'x13' 3 BED	28'x12' 2 BED	33'x12' 2 BED	36'x12' 2 BED	38'x12' 2 BED	40'x12' 3 BED
Super King (Divan) 6' x 6'6" / 1800mm x 2000mm			✓	✓	-	✓	-	-	-	-	-	-	-	-	-	-	-	-	-
King 5' x 6'3" / 1500mm x 1900mm			-	-	-	-	-	-	-	✓	✓	✓	✓	✓	-	✓	✓	✓	✓
King (Lift Up) 5' x 6'3" / 1500mm x 1900mm			-	-	✓	-	✓	✓	✓	◊	◊	◊	◊	◊	-	◊	◊	◊	◊
Double 4'6" x 6'3" 1350mm x 1900mm			-	-	-	-	-	-	-	-	-	-	-	-	✓	-	-	-	-
Single 3' x 6' / 915mm x 1800mm			✓x 2	✓x 2	✓x 2	✓x 2	-	-	-	-	-	-	-	-	-	-	-	-	-
Single 2'6" x 6' / 760mm x 1800mm			-	-	✓x 2	-	✓x 2	✓x 2	✓x 4	-	-	✓x 2	✓x 2	-	-	-	-	-	-
Single 2'3" x 6' / 675mm x 1800mm			-	-	-	-	✓x 2	-	-	✓x 2	✓x 2	-	-	✓x 4	✓x 2	✓x 2	✓x 2	✓x 2	✓x 4

# Features & options

Standard ✓	Optional ◇	Not available -	Cranleigh Lodge	Clifton Lodge		Autograph		Harlington		Hemsworth					Retreat				
			44'x14' 2 BED	44'x14' 2 BED	44'x14' 3 BED	42'x14' 2 BED	43'x14' 3 BED	42'x13' 2 BED	43'x13' 3 BED	36'x12' 2 BED	40'x12' 2 BED	40'x13' 2 BED (CL)	40'x13' 2 BED	40'x13' 3 BED	28'x12' 2 BED	33'x12' 2 BED	36'x12' 2 BED	38'x12' 2 BED	40'x12' 3 BED
<b>Exterior/Structure</b>																			
			✓	✓	✓	✓	✓	-	-	-	-	-	-	-	-	-	-	-	-
			✓	✓	✓	✓	✓	✓	✓	✓	✓	✓	✓	✓	✓	✓	✓	✓	✓
			-	-	-	-	-	-	-	✓	✓	✓	✓	✓	✓	✓	✓	✓	✓
			✓	✓	✓	✓	✓	✓	✓	◇	◇	◇	◇	◇	◇	◇	◇	◇	◇
			◇	◇	◇	◇	◇	◇	◇	◇	◇	◇	◇	◇	◇	◇	◇	◇	◇
			◇	✓	✓	✓	✓	✓	✓	✓	✓	✓	✓	✓	✓	✓	✓	✓	✓
			✓	◇	◇	◇	◇	◇	◇	◇	◇	◇	◇	◇	◇	◇	◇	◇	◇
			✓	✓	✓	✓	✓	✓	✓	✓	✓	✓	✓	✓	✓	✓	✓	✓	✓
			✓	-	-	✓	✓	-	-	✓	✓	✓	✓	✓	◇	◇	◇	◇	◇
			◇	✓	✓	-	-	✓	✓	◇	◇	◇	◇	◇	◇	◇	◇	◇	◇
			✓	✓	✓	-	-	-	-	-	-	-	-	-	-	-	-	-	-
<b>Interior (Hard wired smoke and heat detector applies to all models)</b>																			
			-	-	-	✓	✓	✓	✓	✓	✓	✓	✓	✓	✓	✓	✓	✓	✓
			✓	-	-	-	-	-	-	-	-	-	-	-	✓	✓	✓	✓	✓
			✓	✓	✓	✓	✓	✓	✓	✓	✓	✓	✓	✓	✓	✓	✓	✓	✓
			✓	✓	✓	◇	◇	✓	✓	✓	✓	✓	✓	✓	✓	✓	✓	✓	✓
			✓	◇	◇	◇	◇	◇	◇	◇	◇	◇	◇	◇	◇	◇	◇	◇	◇
			✓	✓	✓	✓	✓	✓	✓	✓	✓	✓	✓	✓	✓	✓	✓	✓	✓
			✓	✓	✓	✓	✓	✓	✓	✓	✓	✓	✓	✓	✓	✓	✓	✓	✓
			✓	✓	✓	✓	✓	✓	✓	✓	✓	✓	✓	✓	✓	✓	✓	✓	✓
			✓	✓	✓	✓	✓	✓	✓	✓	✓	✓	✓	✓	✓	✓	✓	✓	✓
			✓	✓	✓	✓	✓	✓	✓	◇	◇	◇	◇	◇	◇	◇	◇	◇	◇
			✓	✓	✓	◇	◇	◇	◇	◇	◇	◇	◇	◇	◇	◇	◇	◇	◇
			◇	◇	◇	◇	◇	◇	◇	◇	◇	◇	◇	◇	◇	◇	◇	◇	◇
			-	-	-	-	-	✓	✓	✓	✓	✓	✓	✓	✓	✓	✓	✓	✓
			✓	✓	✓	✓	✓	✓	✓	✓	✓	✓	✓	✓	✓	✓	✓	✓	✓
			✓	✓	✓	◇	◇	◇	◇	◇	◇	◇	◇	◇	◇	◇	◇	◇	◇
			✓	✓	✓	✓	✓	✓	✓	◇	◇	◇	◇	◇	◇	◇	◇	◇	◇
			✓	✓	✓	✓	✓	✓	✓	-	-	-	-	-	-	-	-	-	-

\*Please note: The appliance quantities and sizes available vary per model and layout.

# External dimensions



Dimensions	Cranleigh Lodge	Clifton Lodge		Autograph		Harlington		Hemsworth				Retreat					
	44'x14' 2 BED	44'x14' 2 BED	44'x14' 3 BED	42'x14' 2 BED	43'x14' 3 BED	42'x13' 2 BED	43'x13' 3 BED	36'x12' 2 BED	40'x12' 2 BED	40'x13' 2 BED (CL)	40'x13' 2 BED	40'x13' 3 BED	28'x12' 2 BED	33'x12' 2 BED	36'x12' 2 BED	38'x12' 2 BED	40'x12' 3 BED
Overall height (m) (H1)	3.92	3.92	3.92	3.74	3.74	3.58	3.58	3.53	3.53	3.53	3.53	3.53	3.53	3.53	3.53	3.53	3.53
Height to roof apex (m) H2	3.92	3.92	3.92	3.74	3.74	3.58	3.58	3.53	3.53	3.53	3.53	3.53	3.53	3.53	3.53	3.53	3.53
Overall width inc. gutters (m) (W1)	4.73	4.73	4.73	4.73	4.69	4.26	4.26	4.01	4.01	4.31	4.31	4.31	4.01	4.01	4.01	4.01	4.01
Width at floor level (m) (W2)	4.49	4.49	4.49	4.39	4.39	4.02	4.02	3.73	3.73	4.03	4.03	4.03	3.73	3.73	3.73	3.73	3.73
Overall length inc. towbar (m) (L1)	14.48	14.48	14.48	14.03	14.12	13.86	14.19	12.02	13.2	13.2	13.2	13.2	9.87	11.15	12.05	12.65	13.27
Overall length exc. towbar (m) (L2)	13.88	13.88	13.79	13.72	13.72	13.16	13.49	11.52	12.43	12.24	12.43	12.43	8.90	10.40	11.30	11.90	12.52
Overall length inc. bay (m) (L3)	13.48	13.48	13.48	13.28	13.38	13.07	13.40	11.02	12.2	12.2	12.2	12.2	8.87	10.15	11.05	11.65	12.27
Overall body length (m) (L4)	13.48	13.48	13.48	13.03	13.13	12.86	13.19	11.02	12.2	12.2	12.2	12.2	8.87	10.15	11.05	11.65	12.27

---

## Warranty

**Our Warranty Scheme, alongside a commitment to uncompromising quality, detailed quality checks and focused customer care, means we can offer peace of mind with excellent cover and protection.**



**1-year warranty:** Comprehensive warranty for parts and labour from the date you take ownership (subject to T&C's)

**2-year warranty:** Boiler, sockets/switches, fridge/freezer, microwave, cooker hood and dishwasher

**3-year warranty:** Internal doors/handles, kitchen sink, taps/sanitaryware, gutters/downpipes and radiators

**5-year warranty:** Roof sheets, walls, ceilings/floors, external windows/doors including glazed units (excludes window furniture)

**10-year warranty:** Fully galvanised chassis

Our warranty covers issues arising from faults and defects during manufacture and excludes any damage caused by transport, siting, commissioning, general wear and tear or misuse. Full details of this warranty can be obtained by contacting our customer service team. Our warranty only applies to the original purchaser and is non-transferable.

## Sustainable options

**As part of Omar Group, a leader and innovator in green technologies, we can help you to significantly reduce your carbon footprint and running costs with our Solar Powered Leisure Homes.**

With UK Government plans to phase out gas boilers, we're able and ready to offer a Complete Solar Powered Solution - our thermally efficient holiday homes combined with the latest technology, also mean we can help to minimise the costs associated with the move away from gas. And, it may even be possible for your leisure home to be powered for free using solar power and battery storage!

### Here's a taste of what we offer:

- Solar power and battery storage
- All electric holiday homes
- Car charging points
- Electricity distribution technology – allowing you to use electricity when and where it's needed

**Solar Power** stores energy collected during the day, for use in the evenings when you return to your holiday home.



## Safety

To ensure your safety, all our models are built in accordance with British and European standards BS 3632 and EN1647 and are certified by the National Caravan Council (NCC).

Hard-wired smoke, heat detectors and Carbon Monoxide (CO) detectors are fitted as standard. Upgraded for 2025, all mattresses are now Crib 5 as standard.



Ferndown House, Unit 90, Old Barn Farm Road, Woolsbridge Industrial Park, Three Legged Cross, Wimborne, Dorset BH21 6SU

T 0333 577 5274 | E [info@regalh.co.uk](mailto:info@regalh.co.uk) | W [regalh.co.uk](http://regalh.co.uk)

Regal Leisure Homes is a division of Omar Park Homes Limited. Registered in England No. 06860361.  
Registered Office: London Road, Brandon, Suffolk IP27 0NE

PART OF  **OMAR**  
GROUP

The Omar Group logo consists of the word "OMAR" in a bold, black, sans-serif font, with a small orange house icon to its right. Below "OMAR" is the word "GROUP" in a smaller, black, sans-serif font.