

Holiday Homes *Collection 2023*



ATLAS
LEISURE HOMES



ATLAS
LEISURE HOMES

POST CARD

1st

Creating Lasting Memories and Unforgettable Experiences

At Atlas Leisure Homes we work hard to ensure our Holiday Homes Collection is perfect for the whole family.

Choosing a holiday home should be the start of an exciting voyage. The opportunity for amazing holidays you will never forget. The chance for family adventures you will never experienced before.

Published by Atlas Leisure Homes Limited,
Wiltshire Road, Hull HU4 6PD

Tel: 01482 562101 - Fax: 01482 566033 - website: atlasleisurehomes.co.uk



Where memories are made

For over 30 years the Atlas brand has led the way in holiday home design. Driven by strong interiors and conceptual design cues, structural integrity and a reputation for delivering a high quality product has established Atlas as a market leader.

The ranges feature contemporary fabrics, stylish fittings and an array of practical features, all complemented by stunning exterior appearances ensuring that we have something to suit all tastes and budgets. Because the little things matter, our portfolio of holiday homes offers a handpicked and bespoke selection of some of the finest products.

Each and every model is handcrafted from our head office and manufacturing facilities in Hull. Meticulous care and attention is taken to ensure that you get the absolute best from your holiday home to enable you to create memories and have unforgettable experiences that are more than simply holidays!



CONTENTS

Page

How we manufacture our holiday homes

| | |
|---|----|
| DESIGNED WITH YOU IN MIND | 4 |
| SKILLED CRAFTSMANSHIP | 5 |
| HAND PICKED MATTRESSES | 5 |
| HIGH QUALITY MATERIALS | 6 |
| COMPREHENSIVE WARRANTIES | 7 |
| THE ATLAS 2023 HOLIDAY HOMES COLLECTION | 8 |
| THE ATLAS 2023 LODGE COLLECTION | 9 |
| BUYING A HOME | 10 |

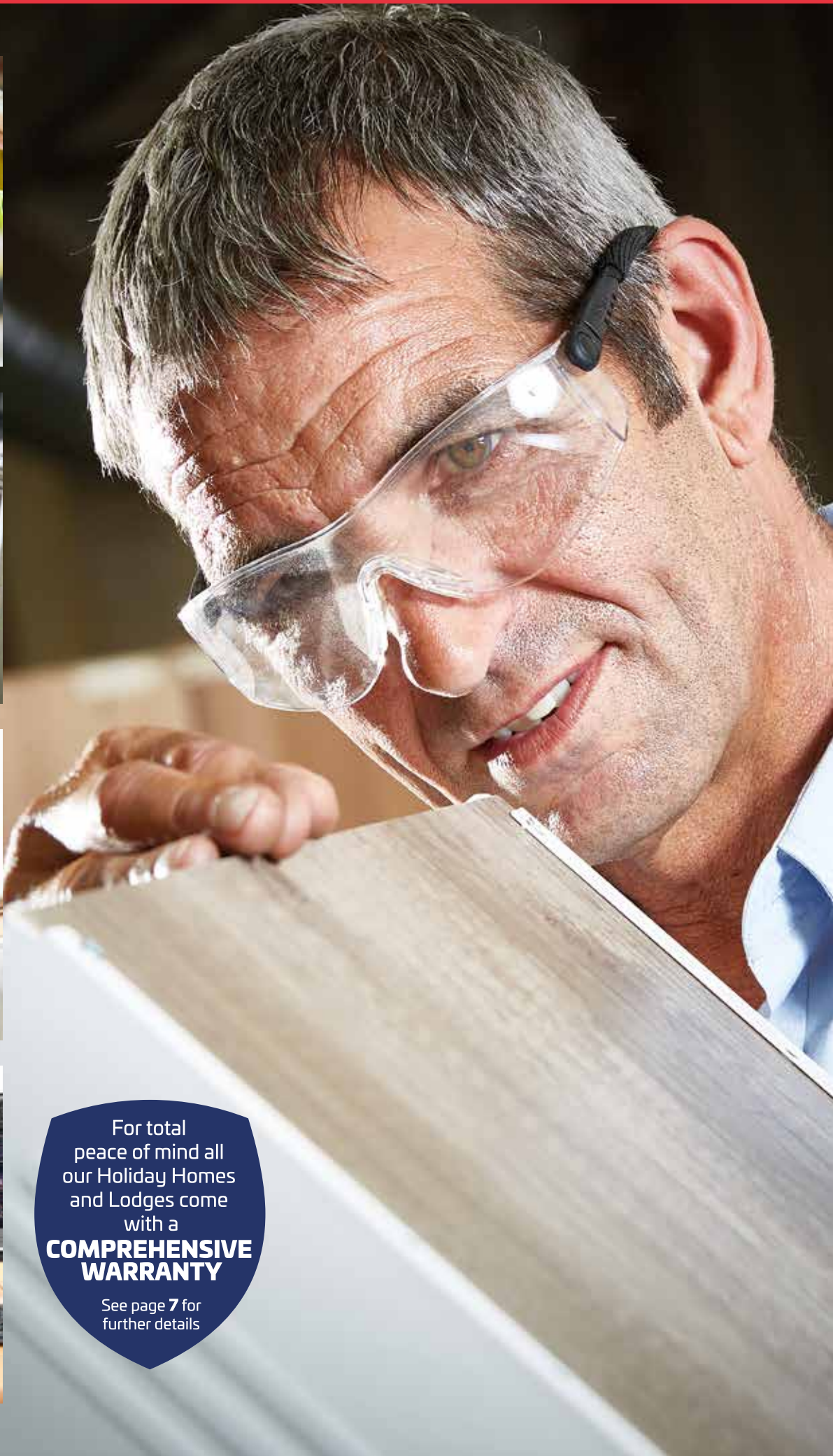
Our range of Atlas lodges:

| | |
|---------------------|----|
| IMAGE 9 | 12 |
| STATUS 4 | 18 |
| DEBONAIR 9 | 24 |
| DEBONAIR 9 (ACCESS) | 30 |
| HERITAGE 4 | 36 |
| SAHARA 3 | 42 |
| CHORUS 6 | 48 |
| MIRAGE 5 | 54 |
| FESTIVAL 4 | 60 |

Features and options:

| | |
|-------------------------------|----|
| STANDARD FEATURES AND OPTIONS | 66 |
| EXTERNAL DIMENSIONS | 68 |
| BED SIZES | 70 |
| EXTERIOR FINISH OPTIONS | 72 |
| ULTRAWARM INSULATION | 74 |
| ATLAS MAIN DEALERS | 75 |
| YOUR ATLAS STOCKIST | 76 |





For total
peace of mind all
our Holiday Homes
and Lodges come
with a
**COMPREHENSIVE
WARRANTY**

See page 7 for
further details



**MADE TO LAST
BY OUR OWN
HIGHLY SKILLED
CRAFTSMEN –
USING ONLY THE
BEST MATERIALS**

At Atlas we pride ourselves on delivering first-class products and first-class service.

Designed from the outset with you in mind, at Atlas we work together to ensure that you receive the best possible holiday home in every way, constructed to the highest standards of design, character and finish.

With a keen eye for detail, the Atlas team takes inspiration from innovative construction ideas to generate practical and beautiful homes making your holiday experiences complete.



**OUR RANGE OF
ENERGY SAVING
OPTIONS**

From **high performance insulation** to **energy saving glazing**, keeping you warm even in the coldest weather.



**HAND PICKED RANGE
OF MATTRESSES FOR
THE BEST NIGHT'S
SLEEP – EVER**



Atlas Comfort Super Deluxe
9" depth with open coil spring and luxury filling.



Atlas Comfort Deluxe
8" depth with Bonell spring.



Atlas Comfort Plus
7.5" depth metal spring.



MAKING YOUR HOME AWAY FROM HOME SOMETHING SPECIAL

High quality materials and exquisite hand craftsmanship are the staples of our manufacturing process. We are very proud of the quality of our work and we genuinely enjoy what we do. What matters is the craft and attention that we bring to each project.

With an extensive range of holiday homes and lodges, you're sure to discover the perfect model for you and your family here at Atlas!





TOTAL PEACE OF MIND WITH A COMPREHENSIVE MANUFACTURERS WARRANTY

Our holiday homes and lodges are built to last, but we know that sometimes things can go wrong, defects arise or components fail. With all Atlas holiday homes, you can relax in the knowledge that in the unlikely event of one of these occurring, our warranty is there to protect you.



All brand new holiday homes and lodges come with a 12 month parts and labour warranty covering everything inside your new purchase.



In addition to the standard 12 month warranty, the following are covered for 2 additional years.

- Furniture manufactured and fitted by Atlas
- Shower cubicle, baths, kitchen sink, taps and sanitaryware.
- Internal doors, door handles, radiators, sockets and switches.
- Gutters, downpipes and cladding
- Dining table and chairs



After the 12 month standard parts and labour warranty, the chassis, roof, walls, floors, ceilings and external doors and windows are covered for an additional 48 months.



If you have chosen one of our models with a fully galvanised chassis then you benefit from a 10 year warranty from the date of purchase.

Terms and conditions apply. See the handbook supplied with your holiday home or lodge for details.



THE HOLIDAY HOME COLLECTION

Leading the way in design and build

The very highest build quality, stunning exteriors and beautifully appointed interiors – you're guaranteed to be able to find your dream holiday home in the 2023 collection.

At Atlas we understand that buying a leisure home is an investment, so we only build holiday homes that will exceed your expectations. From the moment you take ownership of your Atlas holiday home, you will start creating memories to last a lifetime.

A home away from home

With a long-established reputation for outstanding quality, each holiday home features a handpicked and bespoke selection of some of the finest contemporary fabrics, stylish fittings and equipment as standard.

And because the little things can make all the difference to your stay, optional extras including American style fridges and wine chillers make Atlas models truly a home from home experience.

Atlas is known for value and innovation

If you invest in an Atlas holiday home, you can be confident that not only do you own the best in design, innovation and value for money but have also made a contribution to environmental sustainability.


IMAGE 9
12

DEBONAIR 9 (ACCESS)
30

CHORUS 6
48

STATUS 4
18

HERITAGE 4
36

MIRAGE 5
54

DEBONAIR 9
24

SAHARA 2
42

FESTIVAL 4
60



CHORUS 6

The **Chorus 6** is a perennial favourite with its open plan living area featuring elegant L-shaped sofa with armrest featuring USB charging socket, light wood wall panels and furniture with stylish grey drawer fronts and modern electric fire.

The adjoining dining area has a freestanding light wood table top with black metal legs and coordinating black wood dining chairs. This space is separated from the entrance by a built-in shelving unit.

For total peace of mind all our holiday homes and lodges come with a **COMPREHENSIVE WARRANTY**

See page 7 for further details



The fitted kitchen in the **Chorus 6** is stunning. Its focal point is the copper coloured glass splash back with stainless steel and glass overhead vented extractor. There is an electric oven with grill, 4 ring gas hob and integrated fridge/freezer included as standard.



The **Chorus 6** illustrated is the 36ft x 12ft – 2 bedroom. It is shown here with light grey aluminium cladding and white PVC windows and doors and includes optional front French doors.

Note: Deluxe bedding set, lounge scatters, TV and interior accessories are for display purposes only.



The **Chorus 6** master bedroom is truly stunning. The graphite built in wardrobes are complemented by matching overbed storage above the kingsize bed. A dressing table with tub style stool and feature strip lighting to the headboard complete a remarkable sleep space.





The second bedroom also features graphite fitted furniture and twin beds. The **Chorus 6** has room to sleep the whole family and store all those ‘essentials’ you need when you take that well deserved break.

The **Chorus 6** comes complete with central heating, double glazing and extra insulation as standard to guarantee you’ll enjoy your time away whatever the weather has in store.

The **Chorus 6** main bathroom has a large shower cubicle, wash basin with mirrored cabinet above, WC and extractor fan.

With the exception of the 28ft model, all **Chorus 6** holiday homes have an ensuite wash basin and WC to the master bedroom.



What could be better? A family barbecue at your own holiday home. And with the Chorus, there’s plenty of room for them all to enjoy it.





Model illustrated 39ft x 12ft – 2 bed/2 shower

A Lounge with L-shaped sofa and electric fire with modern black surround.

B Dining Area with freestanding dining table and four chairs.

C Kitchen with electric oven/grill, 4 ring gas hob and extractor hood complete with integrated fridge/freezer.

D Twin Bedroom with single beds, wardrobe and feature strip lighting.

E Master Bedroom with kingsize bed, graphite colour fitted wardrobes, dressing table with stool and feature strip lighting.

F Ensuite with wash basin and WC. The 39ft x 12ft model features an additional second shower

G Main Bathroom with wash basin, shower cubicle, WC and extractor fan.



STANDARD FEATURES

| | |
|---|---|
| Lounge | |
| L-shaped lounge seating (with pull out bed) | ✓ |
| Lounge footstool | ✓ |
| Kitchen | |
| Integrated electric oven and grill | ✓ |
| 4 ring gas hob with electric extractor hood | ✓ |
| Cooker extractor vented to exterior | ✓ |
| Integrated fridge freezer | ✓ |
| Appliance shelf and socket | ✓ |
| Dining Area | |
| Freestanding dining table and chairs | ✓ |
| Bathroom(s) | |
| Ensuite to master bedroom | ✓ |
| Extractor fan to main bathroom | ✓ |
| Bedroom(s) | |
| Feature strip lighting to bedrooms | ✓ |
| Throughout | |
| Central heating | ✓ |
| Extra insulation | ✓ |
| Low energy lighting | ✓ |
| Sockets with USB port | ✓ |
| Exterior | |
| PVC double glazing | ✓ |

POPULAR OPTIONS

| | |
|--|--|
| Front French doors | |
| Fully galvanised chassis | |
| Pre galvanised chassis | |
| Ultrawarm insulation | |
| Upgrade to graphite windows | |
| Environmental colours | |
| Environmental colours complete with graphite windows & doors | |
| Rigid PVC cladding white windows | |
| Rigid PVC cladding colour windows | |
| Canexel cladding white windows | |
| Canexel cladding coloured windows | |
| Timber cladding oak windows | |
| Integrated microwave | |
| Integrated dishwasher* | |
| Integrated washer/dryer* | |
| Integrated washing machine* | |
| Coffee table | |
| Lounge scatter cushions | |
| Plinth heaters & heated towel rails | |
| Lift up double bed (gas strut) base | |
| Gazunder twin bed | |
| TV points & co-ax to bedrooms | |
| Hallway door | |
| Standard bedding set | |
| Deluxe bedding set | |

**Only 1 full size appliance per model*

WINTER WARM PACK

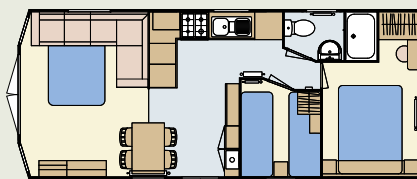
| | |
|-------------------|--|
| to include | |
| Central heating | |
| Double glazing | |

Please take a moment to choose which options you would like to be included in your new Atlas Chorus.

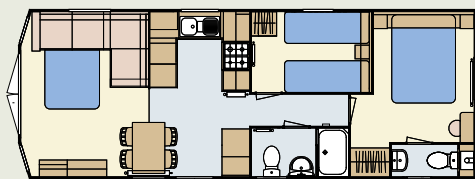
You can tick the appropriate box, which will help you specify your new holiday home.

Please see the matrix on page 66 for a comprehensive list of options.

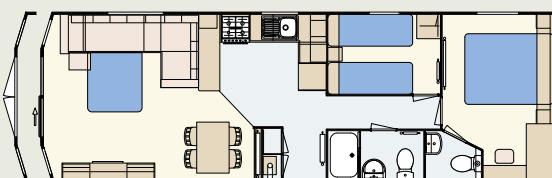
FLOOR PLANS



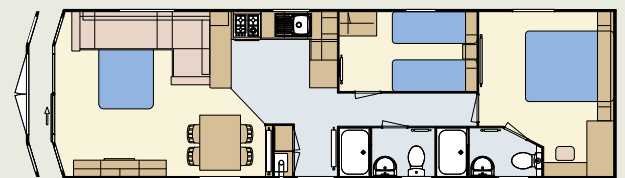
28 x 12 – 2 bedroom/6 berth



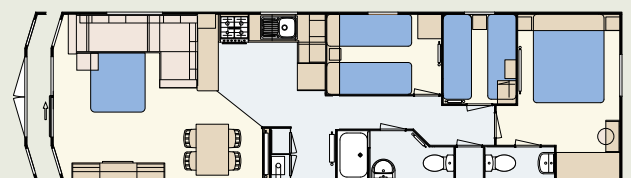
32 x 12 – 2 bedroom/6 berth



36 x 12 – 2 bedroom/6 berth



39 x 12 – 2 bedroom/6 berth – 2 shower model



40 x 12 – 3 bedroom/8 berth

| | IMAGE 9 | STATUS 4 | DEBONAIR 9 | DEBONAIR 9 (ACCESS) | HERITAGE 4 | SAHARA 2 | CHORUS 6 | MIRAGE 5 | FESTIVAL 4 |
|-------------------|---|----------|------------|---------------------|------------|----------|----------|----------|------------|
| Exterior | Painted chassis | × | ● | ● | ● | ● | ● | ● | ● |
| | Pre-galvanised chassis | ● | □ | □ | □ | □ | □ | □ | □ |
| | Fully galvanised chassis | □ | □ | □ | □ | □ | □ | □ | □ |
| | Woodgrain aluminium cladding | ● | ● | ● | ● | ● | ● | ● | ● |
| | Environmental green exterior | □ | □ | □ | □ | □ | □ | □ | □ |
| | Canoxel cladding | □ | □ | □ | □ | □ | □ | □ | □ |
| | Rigid PVC cladding | □ | □ | □ | □ | □ | □ | □ | □ |
| | Timber cladding | □ | □ | □ | □ | □ | □ | □ | □ |
| | Exterior light(s) | ● | ● | ● | ● | ● | ● | ● | □ |
| | Front French door(s) inc. downlighter | × | □ | × | × | □ | × | □ | × |
| | Sliding patio door(s) inc. downlighter | ● | × | □ | × | × | □ | × | × |
| Insulation | Ultrawarm insulation | □ | □ | □ | □ | □ | □ | □ | □ |
| | Trace heating | □ | □ | □ | □ | □ | □ | □ | □ |
| | PVCu double glazed windows and doors | ● | □ | □ | □ | □ | □ | ● | □ |
| | 'Low E' double glazing | □ | □ | □ | □ | □ | □ | □ | □ |
| Interior | Gas combi central heating with thermostatic radiator valves | ● | □ | □ | □ | □ | □ | ● | □ |
| | Gas water heater – 11 litre capacity | × | ● | ● | ● | ● | ● | × | ● |
| | Electric plinth heaters with heated towel rails | × | □ | □ | □ | □ | □ | □ | □ |
| | Net curtains or voiles | ● | ● | ● | ● | ● | ● | ● | □ |
| | Low energy lighting | ● | ● | ● | ● | ● | ● | ● | ● |

At Atlas we know that, even when you're on holiday, you still want all the home comforts you're used to. The entire Atlas range includes many domestic style features you may not expect to find in a holiday home as standard. Our wide range of models offers an unparalleled standard finish on each caravan including:

| | |
|--|---|
| Tongue & grooved P5 moisture resistant flooring | ✓ |
| Underfloor insulation | ✓ |
| Lagged hot and cold water exterior pipework | ✓ |
| Flush internal doors with satin steel handles | ✓ |
| Venetian blinds to kitchen/shower/ensuite and bathroom | ✓ |
| Energy efficient light fittings | ✓ |
| All showers are fitted with thermostatic mixer valves | ✓ |
| Vaulted ceilings throughout | ✓ |
| Smoke detector | ✓ |
| Carbon monoxide detector | ✓ |
| Fire extinguisher | ✓ |
| Emergency escape windows | ✓ |

Standard Bedding Set

consists of: 4 x bedroom scatters, runners for all beds, duvet covers for all beds, pillow cases for all beds.

De-luxe Bedding Set

consists of: 4 x bedroom scatters, runners for all beds, duvet covers for all beds, pillow cases for all beds, pillow inserts and duvet inserts for all beds, bolster (main bed only)

We also offer an exciting range of options, unique to each model, allowing you to make your holiday home truly individual.

Diagram Table Key

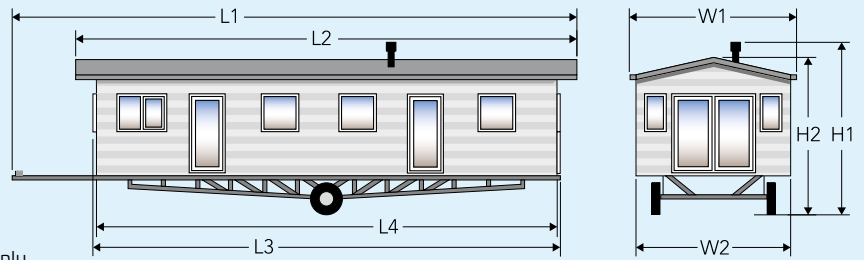
- Standard
- Option
- × Not available
- ¹ Only available in 35ft x 12ft – 2 bed
- ² Only available in 13ft models

| | | IMAGE 9 | STATUS 4 | DEBONAIR 9 | DEBONAIR 9 (ACCESS) | HERITAGE 4 | SAHARA 2 | CHORUS 6 | MIRAGE 5 | FESTIVAL 4 |
|---------------------------------|--|---------|----------|----------------|---------------------|----------------|----------|----------|----------|----------------|
| Lounge & Dining Area | Freestanding suite | ● | ● | ● | ● | ● | × | × | × | × |
| | Fold out occasional bed | ● | ● | ● | ● | ● | ● | ● | ● | ● |
| | Fixed dinette | × | × | × | × | × | × | × | ● | ● |
| | Freestanding dining table and four chairs | ● | ● | ● | ● | ● | ● | ● | □ | □ |
| | Scatter cushions to lounge | ● | ● | ● | ● | □ | □ | □ | □ | □ |
| | Electric fire | ● | ● | ● | ● | ● | □ | ● | ● | ● |
| | Coffee table | ● | ● | □ | □ | □ | □ | □ | □ | □ |
| | Provision for up to 32" wall mounted TV (does not include bracket) | □ | ● | □ | ● | ● | □ | □ | □ | □ |
| Kitchen/ Utility Room | Electric extractor hood | ● | ● | ● | ● | ● | ● | ● | □ | □ |
| | 4 burner hob with electronic ignition | × | × | × | × | ● | ● | ● | ● | ● |
| | 5 burner hob with electronic ignition | ● | ● | ● | ● | × | × | × | × | × |
| | Soft close hinges to doors throughout | ● | ● | ● | ● | × | × | × | × | × |
| | Integrated microwave oven | ● | ● | □ | □ | □ | □ | □ | □ | □ |
| | Integrated dishwasher | □ | □ | □ | □ | □ | □ | □ | □ | □ ¹ |
| | Integrated washing machine or washer dryer | □ | □ | □ | □ | □ | □ | □ | □ | □ ¹ |
| | Integrated fridge/freezer | ● | ● | ● | ● | ● | ● | ● | □ | □ |
| | Wine cooler | □ | × | □ ² | × | □ ² | × | × | × | × |
| Bedrooms | Freestanding metal bed frames with interior sprung mattresses | ● | ● | ● | ● | ● | ● | ● | ● | ● |
| | Gas strut assisted metal lift up storage bed to main bedroom | ● | ● | □ | □ | □ | □ | □ | □ | □ |
| | TV point to master bedroom | ● | ● | □ | ● | ● | □ | □ | □ | □ |
| | TV point to twin bedroom | ● | □ | □ | □ | □ | □ | □ | □ | □ |
| | 'Gazunder' space saving bed (twin rooms only) | □ | □ | □ | × | □ | □ | □ | □ | □ |
| Bathroom/ Shower | Soft close toilet seat(s) | ● | ● | ● | ● | ● | ● | ● | ● | ● |
| | Extractor fan to main shower/bathroom | ● | ● | ● | ● | ● | ● | ● | ● | ● |
| | Extractor fan to en-suite/ separate toilet | ● | ● | ● | ● | ● | ● | ● | ● | ● |
| | Shower cubicle in lieu of bath | □ | □ | × | × | × | × | × | × | × |
| | Towel radiator as part of central heating package | □ | □ | □ | □ | □ | □ | □ | □ | □ |
| | Shower over bath | □ | □ | × | × | × | × | × | × | × |
| | Shower in lieu of bath | □ | □ | × | × | × | × | × | × | × |

We have carefully listed the length, width and height across the range of our atlas lodges collection per model, overall base size and berth configurations

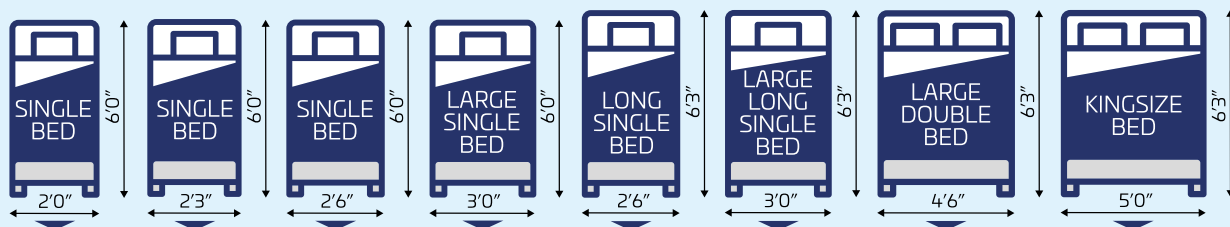
Dimensions shown are for standard clad units only, please contact Atlas for dimensions of units with optional cladding.

Please note: The illustration is a guide for the external dimensions only.



| MODEL | L1 | L2 | L3 | L4 | W1 | W2 | H1 | H2 |
|---|------------------|------------------|------------------|------------------|---------------|---------------|----------------|----------------|
| IMAGE 9 | | | | | | | | |
| 41 x 12-6 - 2 bed/6 berth | 13.677m 44' 10½" | 12.877m 42' 3" | 12.527m 41' 1" | 12.527m 41' 1" | 4.113m 13' 6" | 3.835m 12' 7" | 3.430m 11' 3" | 3.430m 11' 3" |
| 41 x 13 - 2 bed/ 6 berth _{BS3632} | 13.735m 45' 0" | 13.195m 43' 3" | 12.685m 41' 7" | 12.685m 41' 7" | 4.22m 13' 10" | 4.02m 13' 2" | 3.587m 11' 9" | 3.587m 11' 9" |
| STATUS 4 | | | | | | | | |
| 38 x 12-6 - 2 bed/6 berth | 12.913m 42' 4" | 12.176m 40' 0" | 11.863m 39' 0" | 11.833m 38' 9" | 4.113m 13' 6" | 3.835m 12' 7" | 3.400m 11' 2" | 3.400m 11' 2" |
| 39 x 12-6 - 3 bed/8 berth | 13.217m 43' 4" | 12.480m 41' 0" | 12.170m 40' 0" | 12.140m 39' 8" | 4.113m 13' 6" | 3.835m 12' 7" | 3.400m 11' 2" | 3.400m 11' 2" |
| DEBONAIR 9 | | | | | | | | |
| 36 x 12 - 2 bed/6 berth | 12.392m 40' 7¾" | 11.575m 37' 11¾" | 11.447m 37' 6¾" | 11.147m 36' 6¾" | 3.860m 12' 8" | 3.680m 12' 1" | 3.390m 11' 1½" | 3.390m 11' 1½" |
| 38 x 12 - 2 bed/6 berth | 13.092m 42' 11½" | 12.275m 40' 3¾" | 12.147m 39' 10¼" | 11.847m 38' 10½" | 3.860m 12' 8" | 3.680m 12' 1" | 3.390m 11' 1½" | 3.390m 11' 1½" |
| 38 x 12 - 3 bed/8 berth | 13.092m 42' 11½" | 12.275m 40' 3¾" | 12.147m 39' 10¼" | 11.847m 38' 10½" | 3.860m 12' 8" | 3.680m 12' 1" | 3.390m 11' 1½" | 3.390m 11' 1½" |
| 40 x 12 - 2 bed/6 berth | 13.395m 43' 11" | 12.875m 42' 3" | 12.645m 41' 6" | 12.345m 40' 6" | 3.860m 12' 8" | 3.680m 12' 1" | 3.390m 11' 1½" | 3.468m 11' 5" |
| 38 x 13 - 2 bed/6 berth | 13.092m 42' 11½" | 12.275m 40' 3¾" | 12.147m 39' 10¼" | 11.847m 38' 10½" | 4.164m 13' 9" | 3.984m 13' 1" | 3.428m 11' 3" | 3.428m 11' 3" |
| 40 x 13 - 2 bed/6 berth | 13.395m 43' 11" | 12.875m 42' 3" | 12.645m 41' 6" | 12.345m 40' 6" | 4.164m 13' 9" | 3.984m 13' 1" | 3.508m 11' 6" | 3.508m 11' 6" |
| 40 x 13 - 3 bed/8 berth | 13.459m 44' 2" | 12.642m 41' 6" | 12.514m 41' 1" | 12.214m 40' 1" | 4.164m 13' 9" | 3.984m 13' 1" | 3.428m 11' 3" | 3.428m 11' 3" |
| DEBONAIR 9 (ACCESS) | | | | | | | | |
| 39 x 12 - 2 bed/6 berth | 13.037m 42' 9" | 12.377m 40' 7" | 12.317m 40' 5" | 12.367m 40' 7" | 3.860m 12' 8" | 3.680m 12' 1" | 3.390m 11' 1½" | 3.390m 11' 1½" |
| HERITAGE 4 | | | | | | | | |
| 36 x 12 - 2 bed/6 berth | 12.189m 40' 0" | 11.507m 37' 9¼" | 11.115m 36' 5¾" | 11.115m 36' 5¾" | 3.860m 12' 8" | 3.680m 12' 1" | 3.390m 11' 2" | 3.390m 11' 2" |
| 38 x 12 - 2 bed/6 berth | 12.676m 41' 7" | 11.994m 39' 4" | 11.602m 38' 1" | 11.602m 38' 1" | 3.860m 12' 8" | 3.680m 12' 1" | 3.390m 11' 2" | 3.390m 11' 2" |
| 39 x 12 - 2 bed/6 berth | 12.957m 42' 6" | 12.437m 40' 10" | 11.907m 39' 0" | 11.907m 39' 0" | 3.860m 12' 8" | 3.68m 12' 1" | 3.517m 11' 6" | 3.517m 11' 6" |
| 40 x 12 - 3 bed/8 berth | 13.438m 44' 1¼" | 12.756m 41' 10¼" | 12.364m 40' 6¾" | 12.364m 40' 6¾" | 3.860m 12' 8" | 3.680m 12' 1" | 3.390m 11' 2" | 3.390m 11' 2" |
| 38 x 13 - 2 bed/6 berth | 12.676m 41' 7" | 11.994m 39' 4" | 11.602m 38' 1" | 11.602m 38' 1" | 4.164m 13' 9" | 3.984m 13' 1" | 3.428m 11' 3" | 3.428m 11' 3" |
| 39 x 13 - 2 bed/6 berth | 12.957m 42' 6" | 12.437m 40' 10" | 11.907m 39' 0" | 11.907m 39' 0" | 4.164m 13' 9" | 3.984m 13' 1" | 3.558m 11' 8" | 3.558m 11' 8" |
| 40 x 13 - 3 bed/8 berth | 13.438m 44' 1¼" | 12.756m 41' 10¼" | 12.364m 40' 6¾" | 12.364m 40' 6¾" | 4.164m 13' 9" | 3.984m 13' 1" | 3.428m 11' 3" | 3.428m 11' 3" |

| MODEL | L1 | L2 | L3 | L4 | W1 | W2 | H1 | H2 |
|-------------------------------|---------------------|--------------------|--------------------|--------------------|---------------|---------------|---------------|---------------|
| SAHARA 2 | | | | | | | | |
| 32 x 12 - 2 bed/6 berth | 10.960m 35' 11" | 10.390m 34' 1" | 10.061m 33' 0" | 9.911m 32' 6" | 3.860m 12' 8" | 3.680m 12' 0" | 3.365m 11' 0" | 3.365m 11' 0" |
| 36 x 12 - 2 bed/6 berth | 12.134m 39' 10" | 11.564m 37' 11" | 11.234m 36' 10" | 11.084m 36' 4" | 3.860m 12' 8" | 3.680m 12' 0" | 3.365m 11' 0" | 3.365m 11' 0" |
| 38 x 12 - 2 bed/6 berth | 12.653m 41' 6" | 12.083m 39' 8" | 11.753m 38' 7" | 11.603m 38' 1" | 3.860m 12' 8" | 3.680m 12' 0" | 3.365m 11' 0" | 3.365m 11' 0" |
| 38 x 12 CL - 2 bed/8 berth | 12.790m 42' 0" | 11.940m 39' 2" | 11.740m 38' 6" | 11.740m 38' 6" | 3.860m 12' 8" | 3.680m 12' 0" | 3.365m 11' 0" | 3.365m 11' 0" |
| 39 x 12 - 3 bed/8 berth | 13.094m 42' 11" | 12.524m 41' 1" | 12.194m 40' 0" | 12.044m 39' 6" | 3.860m 12' 8" | 3.680m 12' 0" | 3.365m 11' 0" | 3.365m 11' 0" |
| CHORUS 6 | | | | | | | | |
| 28 x 12 - 2 bed/6 berth | 9.732m 31' 11" | 9.170m 30' 1" | 8.682m 28' 6" | 8.682m 28' 6" | 3.860m 12' 8" | 3.680m 12' 1" | 3.468m 11' 5" | 3.468m 11' 5" |
| 32 x 12 - 2 bed/6 berth | 10.95m 35' 11" | 10.357m 34' 0" | 9.900m 32' 6" | 9.900m 32' 6" | 3.860m 12' 8" | 3.680m 12' 1" | 3.468m 11' 5" | 3.468m 11' 5" |
| 36 x 12 - 2 bed/6 berth | 11.944m 39' 2" | 11.458m 37' 6" | 11.160m 36' 7" | 10.894m 35' 8" | 3.860m 12' 8" | 3.680m 12' 1" | 3.390m 11' 2" | 3.390m 11' 2" |
| 39 x 12 - 2 bed/6 berth | 13.090m 42' 11" | 12.503m 41' 0" | 12.022m 39' 5" | 12.022m 39' 5" | 3.860m 12' 8" | 3.680m 12' 1" | 3.468m 11' 5" | 3.468m 11' 5" |
| 40 x 12 - 3 bed/8 berth | 13.200m 43' 3" | 12.669m 41' 5" | 12.321m 40' 4" | 12.221m 40' 0" | 3.860m 12' 8" | 3.680m 12' 1" | 3.390m 11' 2" | 3.390m 11' 2" |
| MIRAGE 5 | | | | | | | | |
| 26 x 12 - 2 bed/6 berth | 9.126m 29' 11" | 8.640m 28' 4" | 8.276m 27' 2" | 8.076m 26' 6" | 3.860m 12' 8" | 3.680m 12' 1" | 3.365m 11' 0" | 3.365m 11' 0" |
| 28 x 12 - 2 bed/6 berth | 9.630m 31' 6" | 9.080m 29' 8" | 8.886m 29' 2" | 8.686m 28' 5" | 3.860m 12' 7" | 3.680m 12' 1" | 3.390m 11' 2" | 3.390m 11' 2" |
| 32 x 12 - 2 bed/6 berth | 10.850m 35' 6" | 10.300m 33' 8" | 10.106m 33' 6" | 9.906m 32' 5" | 3.860m 12' 7" | 3.680m 12' 1" | 3.390m 11' 2" | 3.390m 11' 2" |
| 35 x 12 - 2 bed/6 berth | 12.095m 39' 7" | 11.245m 36' 9" | 10.848m 35' 6" | 10.818m 35' 5" | 3.860m 12' 7" | 3.680m 12' 1" | 3.390m 11' 2" | 3.390m 11' 2" |
| 36 x 12 - 3 bed/8 berth | 12.524m 41' 0" | 11.574m 37' 9" | 12.005m 36' 10" | 11.275m 36' 9" | 3.860m 12' 7" | 3.680m 12' 1" | 3.390m 11' 2" | 3.390m 11' 2" |
| FESTIVAL 4 | | | | | | | | |
| 28 x 10 - 2 bed/6 berth | 9.738m 31' 11" | 9.198m 30' 2" | 8.988m 29' 6" | 8.688m 28' 6" | 3.268m 10' 9" | 3.068m 10' 0" | 3.260m 10' 8" | 3.260m 10' 8" |
| 32 x 10 - 2 bed/6 berth | 10.621m 34' 10" | 10.08m 33' 0" | 9.871m 32' 5" | 9.571m 31' 5" | 3.268m 10' 9" | 3.068m 10' 0" | 3.260m 10' 8" | 3.260m 10' 8" |
| 36 x 10 - 3 bed/8 berth | 12.158m 39' 11" | 11.618m 38' 1" | 11.408m 37' 5" | 11.108m 36' 5" | 3.268m 10' 9" | 3.068m 10' 0" | 3.260m 10' 8" | 3.260m 10' 8" |
| 28 x 12 - 2 bed/6 berth | 9.715m 31' 10" | 9.048m 29' 8" | 8.865m 29' 1" | 8.665m 28' 5" | 3.860m 12' 7" | 3.680m 12' 1" | 3.390m 11' 2" | 3.390m 11' 2" |
| 35 x 12 - 2 bed/6 berth | 11.664m 38' 3/4" | 11.061m 36' 3/2" | 10.888m 35' 8 3/4" | 10.688m 35' 1" | 3.860m 12' 7" | 3.680m 12' 1" | 3.390m 11' 2" | 3.390m 11' 2" |
| 36 x 12 - 3 bed/8 berth | 12.160m 39' 10 3/4" | 11.513m 37' 9 1/4" | 11.330m 37' 2 1/4" | 11.130m 36' 6 1/4" | 3.860m 12' 7" | 3.680m 12' 1" | 3.390m 11' 2" | 3.390m 11' 2" |



SAHARA 2

| | | | | | | | | |
|----------------------------|--|--|--|--|--|--|--|--|
| 32 x 12 - 2 bed/6 berth | | | | | | | | |
| 36 x 12 - 2 bed/6 berth | | | | | | | | |
| 38 x 12 - 2 bed/6 berth | | | | | | | | |
| 38 x 12 CL - 2 bed/8 berth | | | | | | | | |
| 39 x 12 - 3 bed/8 berth | | | | | | | | |

CHORUS 6

| | | | | | | | | |
|-------------------------|--|--|--|--|--|--|--|--|
| 28 x 12 - 2 bed/6 berth | | | | | | | | |
| 32 x 12 - 2 bed/6 berth | | | | | | | | |
| 36 x 12 - 2 bed/6 berth | | | | | | | | |
| 39 x 12 - 2 bed/6 berth | | | | | | | | |
| 40 x 12 - 3 bed/8 berth | | | | | | | | |

MIRAGE 5

| | | | | | | | | |
|-------------------------|--|--|--|--|--|--|--|--|
| 26 x 12 - 2 bed/6 berth | | | | | | | | |
| 28 x 12 - 2 bed/6 berth | | | | | | | | |
| 32 x 12 - 2 bed/6 berth | | | | | | | | |
| 35 x 12 - 2 bed/6 berth | | | | | | | | |
| 36 x 12 - 3 bed/8 berth | | | | | | | | |

FESTIVAL 4

| | | | | | | | | |
|-------------------------|--|--|--|--|--|--|--|--|
| 28 x 10 - 2 bed/6 berth | | | | | | | | |
| 32 x 10 - 2 bed/6 berth | | | | | | | | |
| 36 x 10 - 3 bed/8 berth | | | | | | | | |
| 28 x 12 - 2 bed/6 berth | | | | | | | | |
| 35 x 12 - 2 bed/6 berth | | | | | | | | |
| 36 x 12 - 3 bed/8 berth | | | | | | | | |

IF YOU HAVE ANY QUESTIONS ON OUR RANGE, PLEASE CONTACT YOUR PREFERRED STOCKIST

Your ATLAS Stockist

Atlas Leisure Homes Limited
Wiltshire Road,
Hull HU4 6PD

Tel: 01482 562101
Fax: 01482 566033

atlasleisurehomes.co.uk



All photography and images are for illustration and presentation purposes only. The manufacturer reserves the right to vary the specification with or without notice, and at such times and in a manner deemed necessary. Major as well as minor changes may take effect in accordance with supplier changes and our policy of constant development and improvement.

Atlas reserves the right to change any materials, fittings, etc., shown in this brochure at any time and without prior notice as supply or product development demand. All Atlas Leisure Homes are built to comply with all relevant British Standards and Codes of Practice as required by the National Caravan Council certification scheme.

NOTE: Caravan Holiday Homes are not designed for residential occupancy. To use an Atlas Leisure Home, it will need to be correctly sited, have steps or other means of entry and be connected to services (an appropriate propane gas supply, mains electricity to suit the required power offtake, mains water at a pressure to suit the appliances and a waste water/sewage outlet). Due to the nature of our construction methods and practices, it may not always be possible to match patterns precisely on some wallboards and fabrics. Any Park Operator, anywhere in the UK, can purchase an Atlas Leisure Home for you through the Atlas Dealer/Park Distribution Network. Due to the limitation of the print process we recommend that you see the actual products for colours. Photographs of Atlas Leisure Homes on location are for example only and may not have been sited at that location. Decking, patios, fences, barbecues, etc. have been used for illustrative purposes only. E&OE.

If you invest in an ATLAS Leisure Home, you can be confident that not only do you own the best in design, innovation and value for money but have also made a contribution to environmental sustainability.

H2/1121/4K

Where memories are made

ATLAS
LEISURE HOMES



ncc

